

Carnation Original Drizzle Condensed Milk Dessert Sauce Bottle 450g



EAN
7613030037880

Target market(s)
GB, IE

Components

Ingredients

Whole Milk
Sugar
Minimum 8% Milk Fat, 20% Milk Solids not Fat

Nutrient Profile Score

Nutrient Profile Score UK - 19

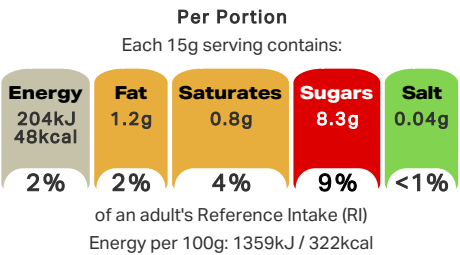
Nutrition

	Per 100g	Per 15g serving	%RI
Energy	1359kJ	204kJ	2%
	322kcal	48kcal	
Fat	8.0 g	1.2 g	2%
of which: saturates	5.0 g	0.8 g	4%
Carbohydrate	55.0 g	8.3 g	3%
of which: sugars	55.0 g	8.3 g	9%
Fibre	nil	nil	-
Protein	7.5 g	1.1 g	2%
Salt	0.26 g	0.04 g	<1%
Contains 30 servings			
Portions should be adjusted for children of different ages			

Calculated Nutrition

	per 100g	Per 15g serving
Energy (kJ)	1359	204
Energy (kcal)	322	48
Fat (g)	8	1.2
of which saturates (g)	5	0.8
Carbohydrate (g)	55	8.3
of which sugars (g)	55	8.3
Fibre (g)	Nil	Nil
Protein (g)	7.5	1.1
Salt (g)	0.26	0.04

Front of Pack Nutrition



Nutrition Other Text

Contains 30 servings
Portions should be adjusted for children of different ages

HFSS Indicator

HFSS Indicator - Not Applicable

Product Description

Brand

Carnation

Manufacturer Brand

Brand - Nestlé

Features

Deliciously creamy Carnation® Original Drizzle
Made from all natural ingredients
Suitable for vegetarians
No artificial colours, flavours or preservatives

Standardised Brand

Brand - Carnation

Regulated Product Name

Sweetened Condensed Milk

Marketing

Company Name

Nestlé

Company Address

PO Box 207,
York,
YO91 1XY,
UK.

Nestlé Ireland,
3030 Lake Drive,
Citywest Business Campus,
Dublin 24.

Product Marketing

Sweet and deliciously creamy, Carnation® Original Drizzle is a condensed milk product made from all natural ingredients and is a scrumptious way to finish tasty sweet treats, from brownies and cakes to ice cream, pancakes and fruit or even in coffee! Carnation® Drizzles are available in Caramel, Chocolate or Original Sweetened Condensed Milk flavour.

Brand Marketing

Established back in 1899, Carnation® aims to make cooking and baking easier than ever. Whether you're topping or mixing, making or baking, there's something for everyone and every occasion. For more information and 100s of great tasting recipes, just visit www.Carnation.co.uk

Other Information

Packaged in a protective atmosphere.

Further Description

Easy recipes at carnation.co.uk!

Enhanced Marketing Data

SEO Metatag

condensed milk
ice cream sauce
dessert sauce
coffee creamer

Health & Lifestyle

Lifestyle

- Suitable for Vegetarians

Allergy Advice

Milk - Contains

Additives

Artificial Colours - Free From
Artificial Flavours - Free From
Artificial Preservatives - Free From

Storage & Usage

Storage Type

Type
Ambient

Preparation and Usage

Drizzle over brownies, berries, cakes and desserts. Or why not sweeten some thick Greek yogurt or creamy porridge?

Opening instructions:
Open cap and remove foil seal before use

Storage

Once opened, store in a fridge and consume within 2 weeks

Durability after Opening

Consume Within - Weeks

2

Brandbank Captured Pack Data

Pack Size

450g e

Numeric Size

Numeric Size - 450

Pack Type

Type - Plastic Bottle

Usage Count

Number of uses - Servings

30

Usage Other Text

Contains 30 servings

Customer Services

Manufacturers Address

PO Box 207,
York,
YO91 1XY,
UK.

Nestlé Ireland,
3030 Lake Drive,
Citywest Business Campus,
Dublin 24.

Return To

Contact us Free
0800 00 00 30 (UK)
00800 6378 5385 (ROI)
PO Box 207,
York,
YO91 1XY,
UK.

Nestlé Ireland,
3030 Lake Drive,
Citywest Business Campus,
Dublin 24.

Telephone Helpline

0800 00 00 30 (UK)
00800 6378 5385 (ROI)

Extended Data

Description Breakdown

Functional Name - Dessert Sauce Bottle
Variant - Original Drizzle Condensed Milk





NUTRITION INFORMATION TYPICAL VALUES	Per 100g	Per 15g serving	% RI
Energy	1359kJ 322kcal	204kJ 48kcal	2%
Fat	8.0 g	1.2 g	2%
of which: saturates	5.0 g	0.8 g	4%
Carbohydrate	55.0 g	8.3 g	3%
of which: sugars	55.0 g	8.3 g	9%
Fibre	nil	nil	-
Protein	7.5 g	1.1 g	2%
Salt	0.26 g	0.04 g	<1%

Contains 30 servings.
Portions should be adjusted for children of different ages.

Ingredients: Whole Milk, Sugar.

